



City of Carthage, Missouri
PUBLIC SERVICES COMMITTEE

August 19, 2025 - 5:30 PM
CITY HALL COUNCIL CHAMBERS

AGENDA

- 1. Call to Order**
- 2. Old Business**
 1. Approval of previous minutes.
- 3. Citizen Participation**

(Citizens wishing to address the Council or Committee should notify the City in advance and provide the item they want to address in written format at least 24 hours before the meeting. Please call Angie Judd at the Parks & Recreation office at 417-237-7035, or email a.judd@carthagemo.gov.)
- 4. New Business**
 1. Consider and discuss disc golf course plans at Kellogg Lake Park.
 2. Consider and discuss the naming of the streets around the fairground at Municipal Park.
 3. Consider and discuss Jasper County Youth Fair grant.
 4. Consider and discuss Carthage Area United Way golf tournament.
 5. Consider and Discuss Carthage Senior Shamble Monthly Tournament at Carthage Golf Course.
 6. Consider and discuss City Clean-up Day and Dumpster Days.
 7. Consider and discuss second annual Soles 4 Paws charity run.
 8. Consider and discuss the 59th Annual Maple Leaf Festival.
 9. Consider and discuss MDC cost-share grant.
- 5. Staff Reports**
 1. Staff reports.
- 6. Other Business**
- 7. Adjournment**

PERSONS WITH DISABILITIES WHO NEED SPECIAL ASSISTANCE CALL 417-237-7000 (VOICE) OR 1-800-735-2466 (TDD VIA RELAY MISSOURI) AT LEAST 24 HOURS PRIOR TO MEETING



City of Carthage, Missouri

PUBLIC SERVICES COMMITTEE

June 17, 2025 - 5:30 PM
CITY HALL COUNCIL CHAMBERS

MINUTES

1. Call to Order

MEMBERS PRESENT: Jana Schramm, Jack Perkins, Ray West

MEMBERS ABSENT: Lori Leece

OTHERS PRESENT:

STAFF PRESENT: Parks and Recreation Director Abi Almandinger, Administrative Assistant Angie Judd, City Administrator Traci Cox, Tourism Director Melissa Little, Head Golf Pro Tyler Markham, Golf Maintenance Superintendent Cody Gray

Chairman Jana Schramm called the meeting to order at 05:30 PM.

2. Old Business

1. Approval of previous minutes.

Mr. West motioned to approve the previous minutes, motion passed.

ACTION: Motion to accept/approve item 2.1. by Ray West;
Motion passed with a 3:0

AYES: Jana Schramm, Jack Perkins, Ray West

NOES: None

ABSTAIN: None

3. Citizen Participation

(Citizens wishing to address the Council or Committee should notify the City in advance and provide the item they want to address in written format at least 24 hours before the meeting. Please call Angie Judd at the Parks & Recreation office at 417-237-7035, or email a.judd@carthagemo.gov.)

Dan Curry, 1141 Belle Air, addressed the committee regarding the golf budget deficit. He suggested that the Golf Pro should operate the course more like a business, rather than having it managed by the City. Regarding the proposed on-demand pricing fee adjustment, Mr. Curry stated that while he prefers not to see prices increase, he recognizes that a rate adjustment is necessary given that fees have not been raised in some time.

4. New Business

1. Consider and discuss Ralleye in the Park.

Ms. Almandinger reported that Ralleye in the Park is an annual event organized by The Bridge Church and will be held in Central Park on September 21st from 8:00 AM to 3:00 PM. The event will include a 5K run starting at The Bridge, a

worship service in the park, a car show, inflatables, a free lunch, and other community outreach activities. She noted that the Parks Department has no concerns and considers it a positive event for the community. Mr. Perkins motioned to approve Ralleye in the Park at Central Park on September 21st from 7am to 4pm and to forward to Council for approval, motion passed.

ACTION: Motion to accept/approve item 4.1. by Jack Perkins;
Motion passed with a 3:0

AYES: Jana Schramm, Jack Perkins, Ray West

NOES: None

ABSTAIN: None

2. Consider and discuss Sudstock.

Ms. Almandinger introduced Jen Black with the Alliance of Southwest Missouri to discuss Sudstock scheduled for August 16 in Municipal Park. She advised this is a free community event promoting "good, clean fun." Activities include inflatables, free hot dogs, and a ladder truck from the Carthage Fire Department. She reported that approximately 1,500 families attended last year's event. Mr. Perkins motioned to allow Sudstock in Municipal Park on August 16th from 9am to 4pm and to forward to Council for approval, motion passed.

ACTION: Motion to accept/approve item 4.2. by Jack Perkins;
Motion passed with a 3:0

AYES: Jana Schramm, Jack Perkins, Ray West

NOES: None

ABSTAIN: None

3. Consider and discuss Jasper County Youth Fair.

Ms. Almandinger introduced Roxanne Willard, Secretary of the Jasper County Youth Fair, to discuss the upcoming annual fair scheduled for July 5–13. Ms. Willard requested permission for exhibitors to camp overnight at the park and to allow food trucks on-site during the event. She expressed appreciation for the continued upkeep and improvements to the facilities and extended an invitation to all to attend. Mr. West motioned to accept the event as outlined and to forward to Council for approval, motion passed.

ACTION: Motion to accept/approve item 4.3. by Ray West;
Motion passed with a 3:0

AYES: Jana Schramm, Jack Perkins, Ray West

NOES: None

ABSTAIN: None

4. Consider and discuss demand based pricing for golf course fees.

Ms. Almandinger introduced Tyler Markham, Head Golf Professional, to present a proposal for implementing demand-based pricing at the golf course. Mr. Markham recommended adjusting green fees based on time of day and demand, with 18-hole rates ranging from \$14 to \$32 and 9-hole rates from \$12 to \$20. He also proposed increasing cart fees to \$10 for 9 holes, \$16 for 18 holes, and \$6 for push carts. A \$125 annual cart fee would be added to memberships that include cart use. These changes are proposed to take effect August 1st. Mr. Markham emphasized the importance of updating rates to address rising operational costs. Ms. Schramm requested that an annual review of golf fees be included to ensure the pricing structure remains current and sustainable. Mr.

Perkins motioned to approve the golf course fee proposal as amended and to forward it to Council for approval, motion passed.

ACTION: Motion to accept/approve item 4.4. by Jack Perkins;
Motion passed with a 3:0

AYES: Jana Schramm, Jack Perkins, Ray West

NOES: None

ABSTAIN: None

5. Consider and discuss RFP for Roundabout Landscaping.

Ms. Almandinger presented landscaping plans for the roundabout and reported that two bids were received: Scott's Landscaping at \$25,170 and Green Meadows Lawn and Landscaping at \$49,590. She recommended awarding the project to Scott's Landscaping based on their previous successful work with the City, including irrigation at Central Park. Ms. Almandinger noted that MODOT has approved the landscaping design and that the maple leaf statue will be installed following the completion of the landscaping. The Parks Department will complete the dirt work and pour the concrete base for the sculpture. Mr. West motioned to accept the Scott's Landscaping bid for \$25,170 and to forward to Council for approval, motion passed.

6. Consider and discuss MOU with Kiwanis Kiddieland.

Ms. Almandinger reported that she met with the President of Kiwanis Kiddieland to review the agreement between the City and Kiwanis, as the previous five-year contract had expired. She presented a new five-year License Agreement that has been prepared with assistance from the city attorney to formalize the continued partnership. Mr. Perkins motioned to accept the License Agreement and forward to Council for approval, motion passed.

ACTION: Motion to accept/approve item 4.6. by Jack Perkins;
Motion passed with a 3:0

AYES: Jana Schramm, Jack Perkins, Ray West

NOES: None

ABSTAIN: None

7. Consider and discuss golf course expenditures and revenue.

Ms. Schramm noted ongoing discussion regarding the projected deficit in the Golf Course FY2026 budget. Ms. Cox stated that the proposed pricing increases are expected to boost revenue and reported that current fiscal year revenues are exceeding projections. She explained that the salary expenditures in the proposed budget reflect full operational staffing levels, including part-time employees. Adjustments are being made to reduce costs, including the reduction of part-time employee hours and the elimination of an unfilled full-time maintenance position. Ms. Schramm suggested the golf course begin passing credit card processing fees on to customers as a way to reduce expenses currently absorbed by the City. Ms. Cox added that HR will need to review salary figures before the budget is presented to the Budget Ways and Means Committee. Ms. Almandinger reported the need to purchase a new mower next fiscal year to replace one that was purchased used in 2014. Mr. Perkins motioned to present a lease payment option to Budget Ways and Means for the purchase of a new mower, motion passed.

ACTION: Motion to accept/approve item 4.7. by Jack Perkins;
Motion passed with a 3:0

AYES: Jana Schramm, Jack Perkins, Ray West
NOES: None
ABSTAIN: None

5. Staff Reports

1. Staff reports.

Ms. Almandinger presented the Golf, Golf Maintenance, Parks Maintenance, and Events & Recreation reports for May. She reported that the tables and chairs for Memorial Hall have been ordered and received, and the Central Park restroom project is nearing completion. Planning for the Red, White & Boom event is progressing, with scheduled activities to include four food trucks, inflatables, a watermelon feed, free rides at Kiddieland, and free swim at the municipal pool. Ms. Almandinger shared that the first Mahjong class at Memorial Hall was a success and, due to high interest, additional class spaces will be added. Pickleball league registration is currently open, although participation has been limited. Ms. Little noted that additional marketing efforts are being made to increase enrollment. Mr. Perkins inquired about future use of the area formerly occupied by the playground at Municipal Park. Ms. Almandinger responded that plans are currently in development for that space. Ms. Schramm added that the Harry S Truman grant may include a parks grant that could assist with the installation of a new playground at Fair Acres. Ms. Almandinger reported that Music in Central Park has their first concert of the summer scheduled for Saturday, June 21st.

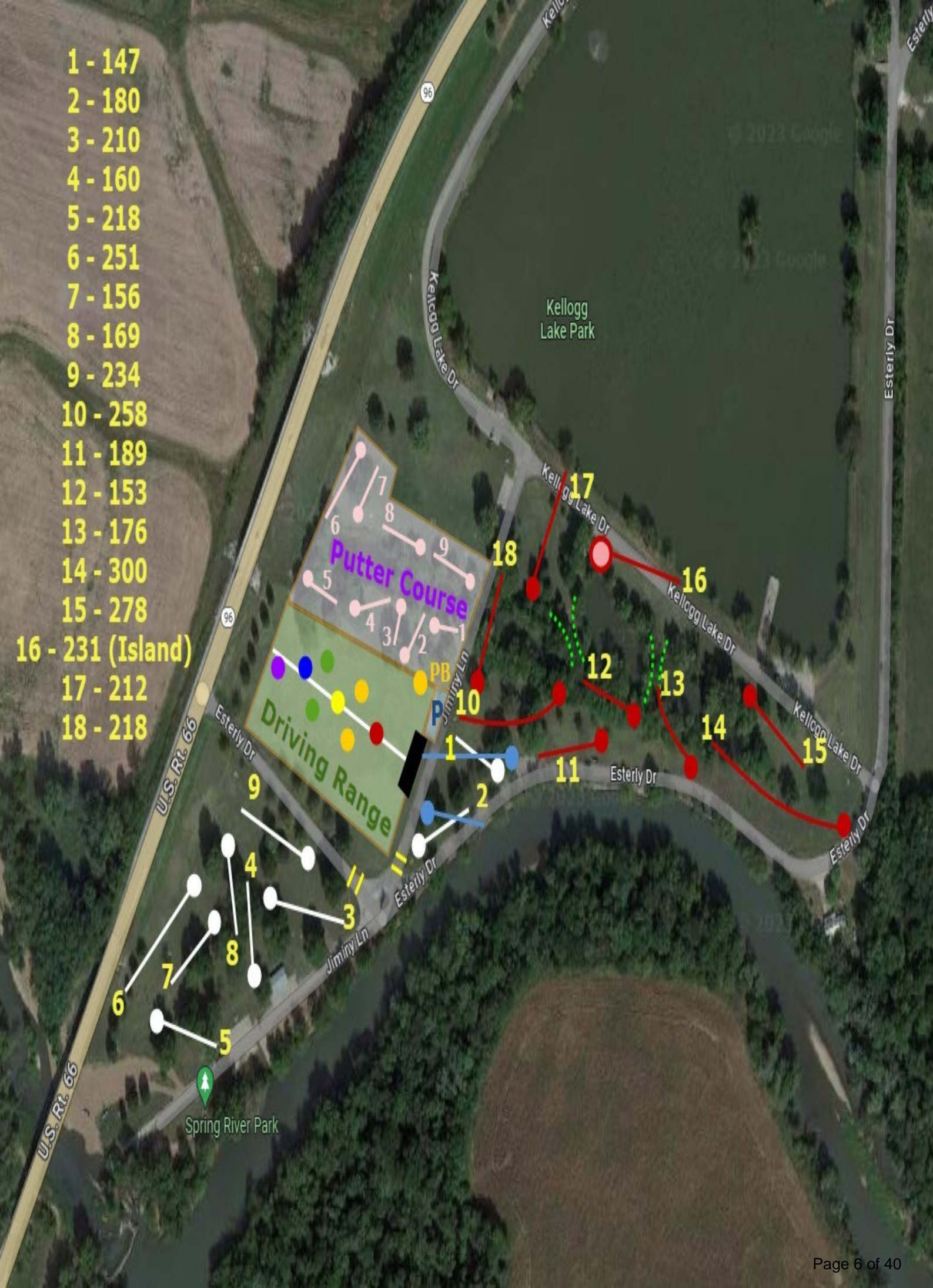
Ms. Little reported that attendance at the Civil War Museum increased in May, with approximately 90% of visitors coming from outside the area. She commended the museum staff for their knowledge and their ability to effectively showcase the museum’s offerings. She also reported that Food Truck Friday, held on June 13th, was very successful and continues to be a profitable event. Additionally, the Visitors Guide has been updated to include a QR code on the back that links to the City website, and it will be distributed statewide.

6. Other Business

7. Adjournment

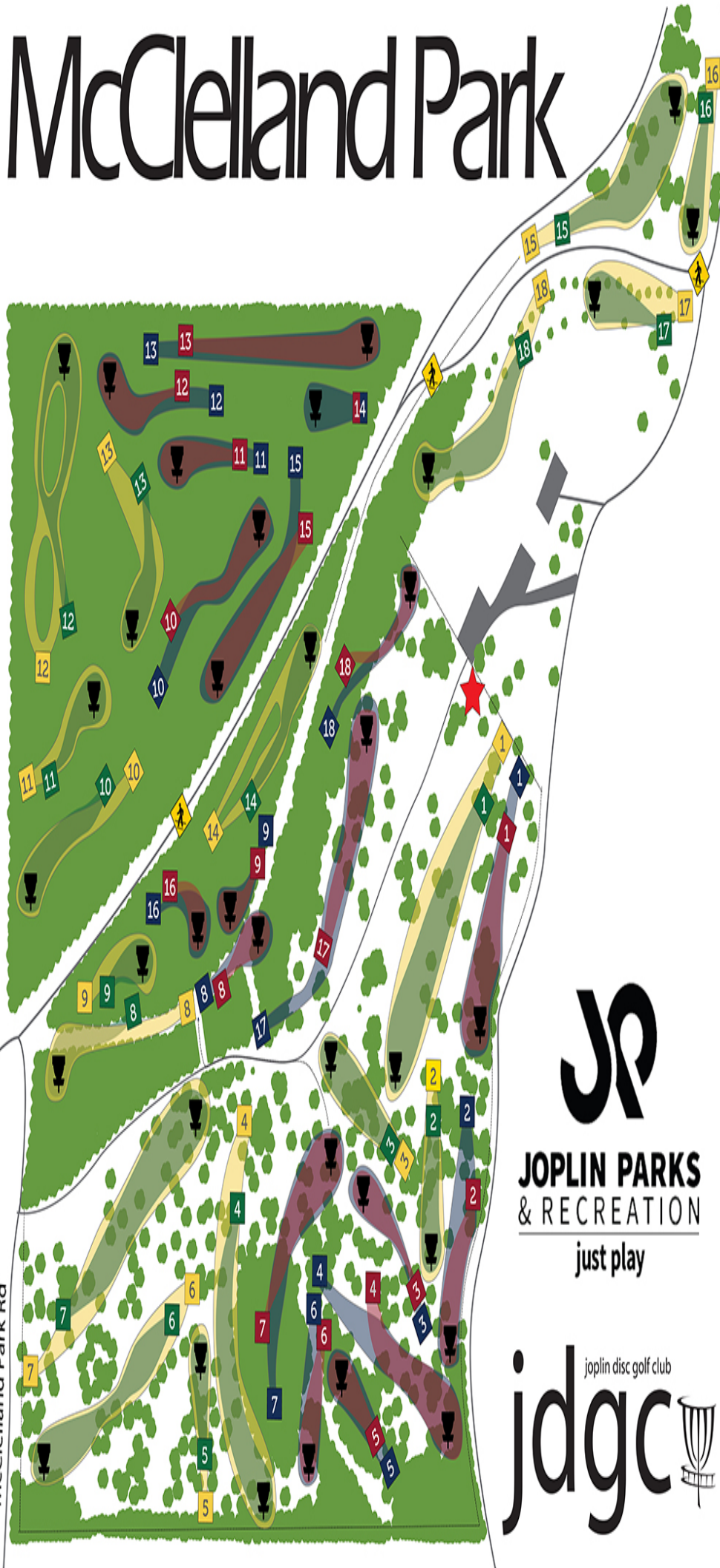
ACTION:	Motion to Adjourn at 06:48 PM by Jack Perkins
	Motion Passed with a 3:0
AYES:	Jana Schramm, Jack Perkins, Ray West
NOES:	None
ABSTAIN:	None

- 1 - 147
- 2 - 180
- 3 - 210
- 4 - 160
- 5 - 218
- 6 - 251
- 7 - 156
- 8 - 169
- 9 - 234
- 10 - 258
- 11 - 189
- 12 - 153
- 13 - 176
- 14 - 300
- 15 - 278
- 16 - 231 (Island)
- 17 - 212
- 18 - 218



McClelland Park

Disc Golf



Lion Course

- 1 - 565' | 639' - PAR 4
- 2 - 288' | 367' - PAR 3
- 3 - 267' | 350' - PAR 3
- 4 - 543' | 707' - PAR 4
- 5 - 216' | 290' - PAR 3
- 6 - 614' | 728' - PAR 4
- 7 - 663' | 898' - PAR 5
- 8 - 285' | 460' - PAR 3
- 9 - 181' | 241' - PAR 3
- 10 - 396' | 452' - PAR 4
- 11 - 286' | 237' - PAR 3
- 12 - 709' | 730' - PAR 5
- 13 - 438' | 499' - PAR 4
- 14 - 420' | 500' - PAR 4
- 15 - 513' | 645' - PAR 4
- 16 - 253' | 294' - PAR 3
- 17 - 263' | 335' - PAR 3
- 18 - 550' | 662' - PAR 4
- 7,550' | 9,034' - PAR 66



Eagle Course

- 1 - 507' | 592' - PAR 4
- 2 - 251' | 363' - PAR 3
- 3 - 352' | 400' - PAR 3
- 4 - 538' | 680' - PAR 4
- 5 - 212' | 263' - PAR 3
- 6 - 213' | 270' - PAR 3
- 7 - 410' | 525' - PAR 4
- 8 - 293' | 339' - PAR 3
- 9 - 226' | 269' - PAR 3
- 10 - 440' | 565' - PAR 4
- 11 - 300' | 338' - PAR 3
- 12 - 468' | 547' - PAR 4
- 13 - 668' | 843' - PAR 5
- 14 - 169' | 169' - PAR 3
- 15 - 488' | 654' - PAR 4
- 16 - 176' | 214' - PAR 3
- 17 - 548' | 665' - PAR 4
- 18 - 367' | 427' - PAR 4
- 6,726' | 8,141' - PAR 64



**JOPLIN PARKS
& RECREATION**

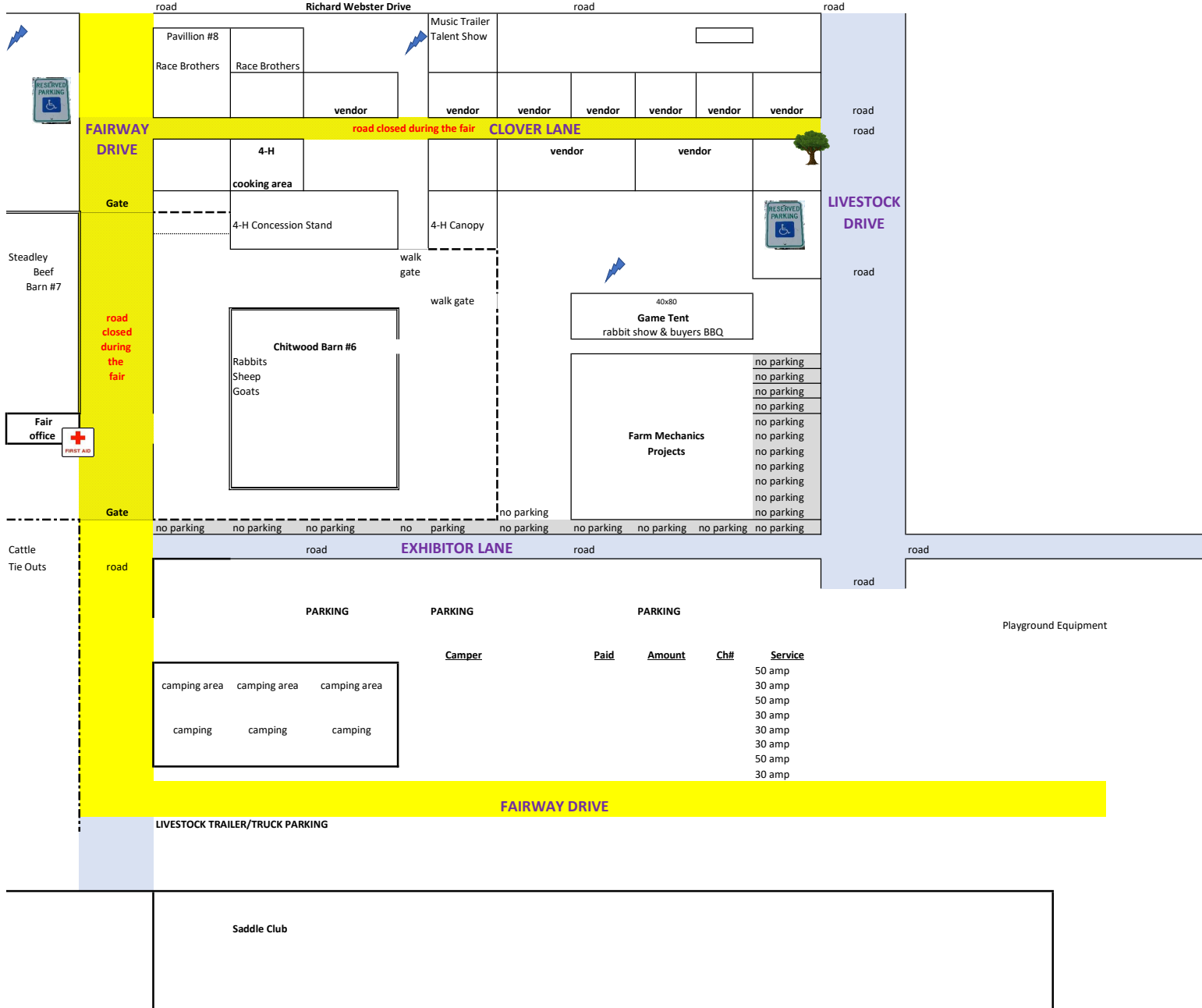
just play



joplin disc golf club







Paid	Amount	Ch#	Service
			50 amp
			30 amp
			50 amp
			30 amp
			30 amp
			30 amp
			50 amp
			30 amp

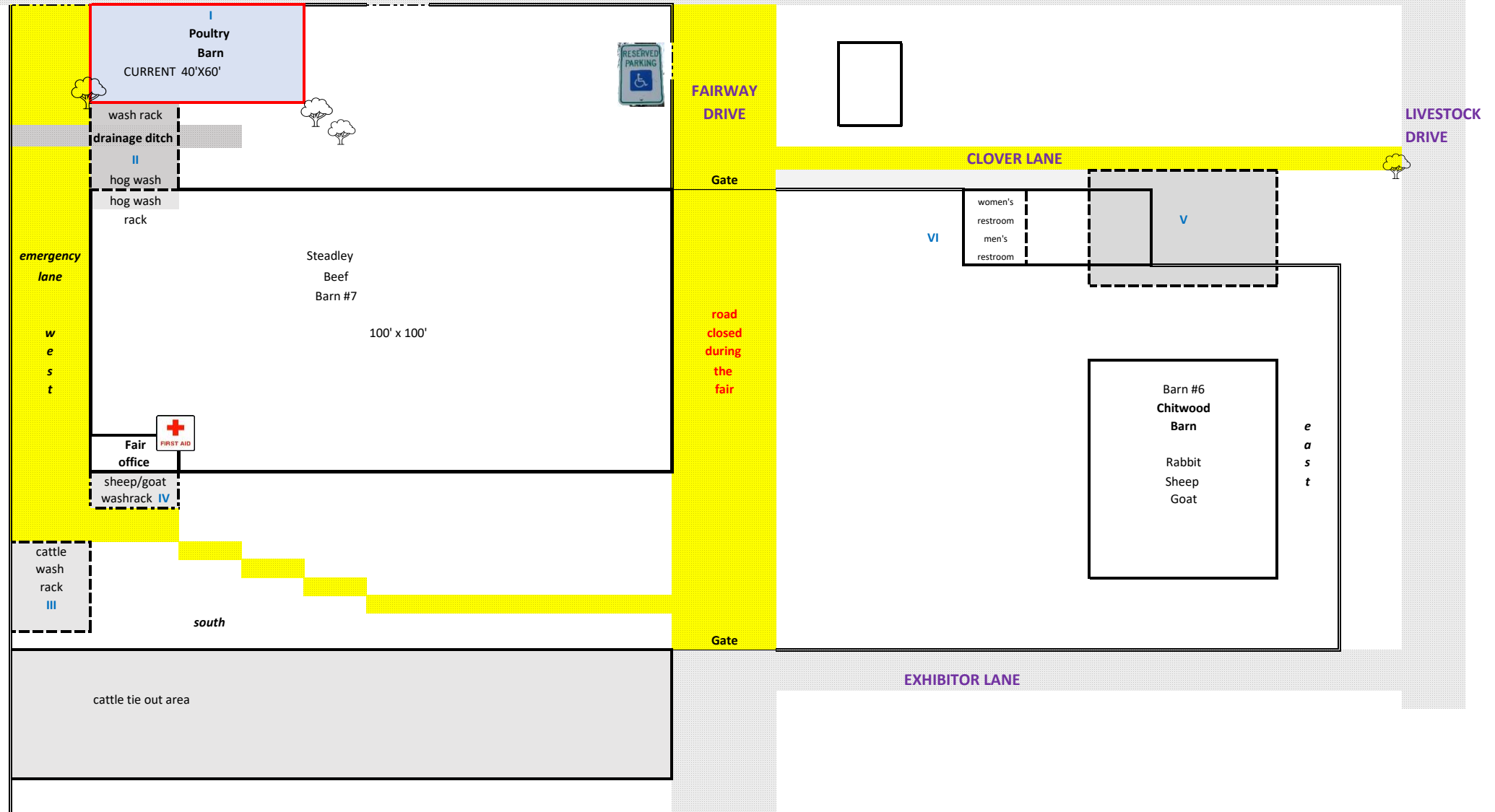
north

JCYF Map 2025

Richard Webster Drive

Grant Writing Approval 8/19/2025

- I. Put new metal roof on existing poultry barn or replace barn making it bigger.
- II. Connect the poultry barn and hog barn with metal awning. Put concrete drainage ditch under awning.
- III. Cover cattle wash rack with metal awning
- IV. Cover sheep/goat washrack with metal awning
- V. Remove the car port from concession stand and replace with awning covering the end of the concession stand over windows.
- VI. Install mini-split in restrooms.
Install temperature control covers.



CARTHAGE AREA UNITED WAY GOLF TOURNAMENT

SATURDAY, SEPTEMBER 20, 2025



free Ice-Cream to all golfers and volunteers

9a-1p at Carthage Municipal Park Golf Course parking lot

no electrical available/ electrical powered by generator



Monthly Carthage Senior Shamble

A senior shamble is becoming a popular event in golf. It is a special tournament that is held for senior golfers throughout the week. Currently, there is a senior shamble near us once a month at every course on a certain day. I am wanting to host our own senior shamble on the first Monday of each month.

After talking to Austin at Schifferdecker, he gets around 100 entries into his senior shamble per month, and I believe we could get to that point as well. At first, I don't think we will get that amount, but if we keep growing it, I don't see why we wouldn't be able to.

What I am proposing is to have us host this event each month, as well as have the flexibility to use the entry fee money how I see fit.

What I would like to be able to do with this registration money is divide it up where the golf course makes revenue, and the players get a fun tournament with good prizes. 100% of the entry fees would go to Carthage Golf Course with some sort of revenue. I plan to use club credit payback for the winners (which would be revenue for the Pro Shop), I would like to use pro shop merchandise for the hole prizes (again this would be revenue for the Pro Shop), and lastly, take the rest of the money and split it up between green fee and cart fee revenue.

If we make the entry cheaper like in our entry form (\$35 and \$40) and charge everyone \$27 (potentially higher with proposed fees), it wouldn't leave us enough money to make the event a good payback with good prizes, leading to fewer sign-ups in future months.

What you would see with my proposed plan on how to divide up the entry fee is a little less on green fee and cart fee revenue but made up for on the retail side. We wouldn't be giving anything away, or discounting anything, the revenues would just be split up amongst a few different line items. See below for a budget template. This is an estimate and accurate if we have 40 entries.

Proposed Event Budget with 40 entries

20 Member sign ups	\$	700.00
20 Non Member sign ups	\$	800.00
	\$	1,500.00

Prizes (2 flights / 3 places)

1st	\$	200.00
2nd	\$	100.00
3rd	\$	50.00
Total Payback per flight	\$	350.00
Total Payback for 2 flights	\$	700.00

This \$700 would go on their accounts as club credit to use towards merchandise - it is guaranteed revenue to our Pro Shop

Hole Prizes	golf balls retail price	golf balls wholesale	our profit
Closest to the Pin Hole #3	\$ 30.00	\$ 21.60	\$ 8.40
Closest to the Pin Hole #6	\$ 30.00	\$ 21.60	\$ 8.40
Closest to the Pin Hole #8	\$ 30.00	\$ 21.60	\$ 8.40
Closest to the Pin Hole #12	\$ 30.00	\$ 21.60	\$ 8.40
Closest to the Pin Hole #17	\$ 30.00	\$ 21.60	\$ 8.40
Total Hole Prize	\$ 150.00	\$ 108.00	\$ 42.00

Pay to CGC in Green Fees	\$	350.00
Pay to CGC in Cart Fees	\$	300.00

TOTAL CARTHAGE GOLF COURSE REVENUE
\$ 1,500.00

Proposed Event Budget with 40 entries & Paying Full Green Fee / Cart Fees

20 Member sign ups	\$	700.00
20 Non Member sign ups	\$	800.00
	\$	1,500.00

30 Sign ups at \$27 Senior Rate	\$	810.00
10 Sign ups at \$39 Regular Rate	\$	390.00

Prizes (2 places)

1st	\$	200.00
2nd	\$	100.00

As you can see from both event budgets, Carthage Golf Course makes the same amount of revenue, but with my suggested budget, we make the same amount while also making it fun for the players with good payouts and prizes

TOTAL CARTHAGE GOLF COURSE REVENUE
\$ 1,500.00



Carthage Golf Course

Monthly Senior Shamble



1st Monday of every month
9 AM Shotgun Start
2 Person Teams
Must be 50+ years old to enter

Format:

2 Person Shamble – Each player hits a tee shot, and the team selects the best drive. From that point, each player plays their own ball until the hole is completed. The best individual score on each hole is used as the team score.

Cost: **entry must be cash*

\$35 per player for Carthage Golf Course Members

\$40 per player for non-members

Registration:

To sign up, please give your team names to the front counter, along with a phone number. You may also give pairing requests along with your registration.

The deadline for entering is the Saturday before the event.

Prizes:

The payback will be determined by the number of entries and will be club credit to the Pro Shop.

Closest to the Pin Contests will be on all Par 3's.

Carthage Senior Shamble

We look forward to seeing you!

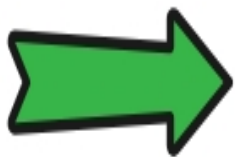
Additional Information for Dumpster/Clean up Days

- Dumpster Day – October 4, 2025. At the parking lot between the Girls Softball Field and Boys Baseball Fields, (between Grand and River). The Police have sent a traffic flow map. The City Administrator and Public Works Director have worked together with us on the plan as well. The space was reserved through Chelsia and also cleared with Jonathan Roberts of the YMCA. Dumpsters will be lined up with volunteers directing cars/trucks to the next available dumpster. We plan to collect Paper, metal, tires and trash. A plan for mattresses has been discussed but not finalized. The Public Works Department will be assisting us that day. The Parks Department involvement is only to use the space and to be able to lock/unlock the parking lot area.
- Clean up Day – We use Central Park to gather and assign the volunteers. It took less than half an hour last time. We used one picnic table to put our trash bags, sign-up sheets... on. The blue trash receptacles were placed along the north side of the park to receive the trash which was gathered. We worked with Public Works for this purpose.

DUMPSTER DAY!

A FREE COMMUNITY CLEANUP EVENT

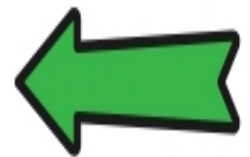
Vision Carthage is teaming up with the Carthage Police Department, Public Works, and Parks & Recreation to provide a FREE community cleanup event!



Saturday, Oct. 4

9 AM - NOON

Location TBD



**FOR CARTHAGE RESIDENTS ONLY
(ADDRESS VERIFICATION REQUIRED)**

ACCEPTING SPONSORS NOW!



VISION CARTHAGE Fall Cleanup

Saturday, Oct. 11
8:30 - 10:30 A.M.

Meet in front of light tunnel area on the square

Volunteers are invited to join us for cleaning tasks and fall planting ahead of the annual Maple Leaf Festival! Let's spruce up the square and parade route as we prepare to welcome thousands of visitors!



Sign up to
volunteer
here or call
417-674-3328!



Carthage Humane Society

13860 Dog Kennel Lane

Carthage, MO 644836

417-358-6402

July 31, 2025

To: Angie Judd, Carthage Parks & Recreation Department

Re: Second Annual Soles-4-Paws – Charity run to benefit the Carthage Humane Society

Date of Race: Sunday, November 16, 2025. Brackets are 5K with dog, 5K Solo, and 1K.

Staging starts at 2:30pm, Races begin at 3pm, with staggered start times.

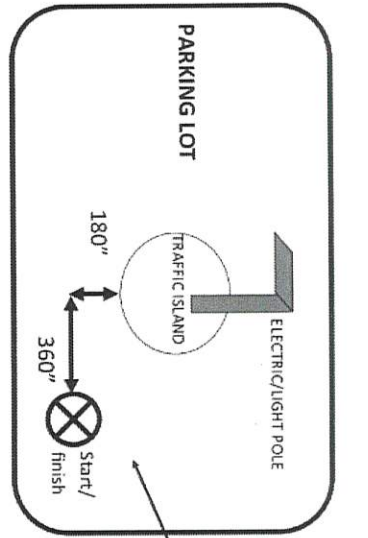
Details:

- *The event will start and finish at the parking lot indicated in the attached race map.**
- *Joplin Roadrunners will be setting up the start/finish line on the parking lot and occupy a few parking spaces in doing so, without the need to interrupt other traffic on the lot.**
- *No road closures are needed. Volunteers will be located at critical intersections to alert drivers of a race in progress.**

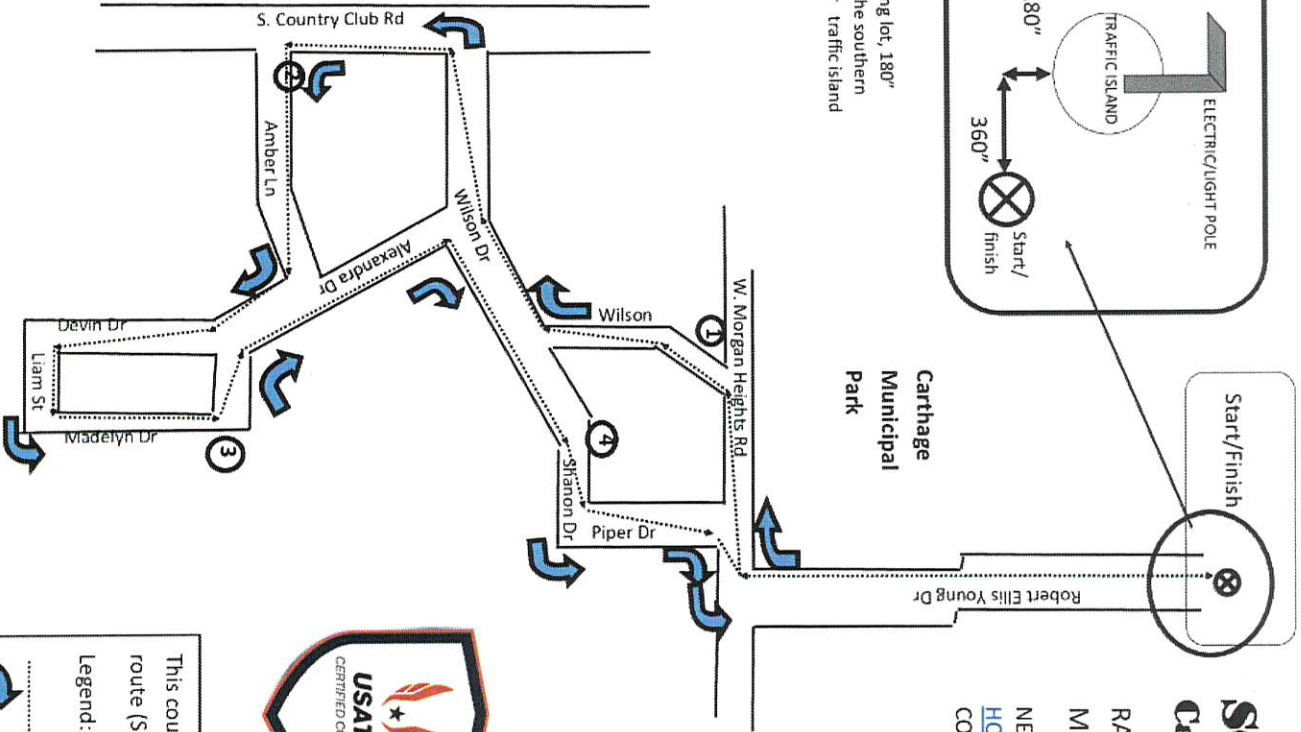
On behalf of the Carthage Humane Society and the Joplin RoadRunners, thank you for your support of this race.

Renay Minshew, Carthage Humane Society

Henri Coeme, Joplin RoadRunners



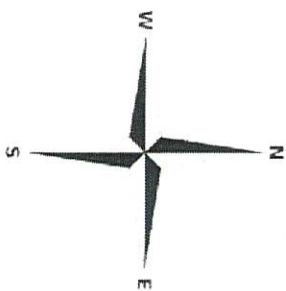
STARTING LINE
Nail located in the parking lot, 180° south and 360° east of the southern most point of the center traffic island



SOLES 4 PAWS - 5K


Carthage, MO

RACE DAY: SUN NOV 16, 2025
 MEASURED BY: HENRI COEME
 NEOSHO, MO - (417) 622-8912
HCOEME@HOTMAIL.COM
 COMPLETED ON 6/17/2024



USATF Certificate
 MO24005MU
 Effective: 06/20/2024
 Through: 12/31/2034

This course was measured using the full width of the road and the shortest possible route (SPR)

Legend: **1** = measured (non-certified) km split points
 = route measured and race direction
 = race turns



August 4, 2025

Re: 2025 Maple Leaf Festival®

Public Services Committee:

Let this letter serve, along with the supporting documents, for approval for the use of certain parks in the City of Carthage, Missouri for the 59th Annual Maple Leaf Festival® to be held October 10-18, 2025.

Thank you for your consideration and continued support.

Respectfully,

Julie Reams
President
Carthage Chamber of Commerce
417-358-2373
jreams@carthagechamber.com



Request to Public Services Committee:

1. Municipal Park Rodeo Arena-October 10-12, 2025, Maple Leaf Festival® Rodeo
2. Use of Fair Acres Park parking lot, October 11, 2025, 11am-11:30am, Bikes, BBQ, & Toy Run.
3. Set-up of a 20' x 40' tent (see map) for the use of Maple Leaf Festival® Events in Central Park
4. Central Park-October 12, 2025, for Maple Leaf Festival® Sunday in the Park-All Day
5. Central Park-Tuesday in the Park, October 14, 2025, for Maple Leaf Festival® Taco Tuesday-3pm-8pm
6. Central Park-Wednesday in the Park, October 15, 2025, for Maple Leaf Festival® Night of Praise-3pm-8pm
7. Central Park-Saturday in the Park, October 18, 2025, for Maple Leaf Festival® Tractor Show-All Day

Request #1

Municipal Park Rodeo October 10-12, 2025, Maple Leaf Festival® Rodeo

We request the use of the Municipal Park Rodeo Arena on behalf of D Bar J Livestock for the rodeo. Hours of operation:

Friday, October 10, 2024, 10 am (set-up) through Sunday, October 12, 2025, 2 am (clean-up)

This is the same company that has coordinated efforts with the June Rodeo. All set-up and teardown will be the same, with electricity usage and overnight stays in the park to watch livestock.

Request #2

Use of Fair Acres Park Parking lot

We request the use of the Fair Acres Parking lot from 11:00am-11:30am on Saturday, October 11th. Motorcycles will congregate in the parking lot before being escorted by the Carthage Police Department through town to take them to the square. Motorcyclists are encouraged to bring a toy to donate to the Carthage Police Department's kids Christmas party in December.

Request #3

Set-up of a 20' x 40' tent (see map) for the use of Maple Leaf Festival® Events in Central Park

We request approval for a tent in Central Park for use during Maple Leaf Festival®. The tent will be erected on Friday, October 10, 2025; this is arranged by Carthage Water & Electric.

Events that this tent will enhance:

Sunday, October 12, 2024-Maple Leaf Festival® Chili Cook-off

The tent will promptly be removed on Monday, October 13th, 2025.

Request #4

Central Park-October 13, 2024, for Maple Leaf Festival® Sunday in the Park

Hours of operation:

Sunday, October 12, 2025, 5:00 am – 5:00 pm

We request Central Park's use on Sunday, October 12, 2025, for the annual chili cook-off and the Carthage Humane Society dog show and races. Picnic tables and trash cans will set up for the event; trash cans will need to be emptied. We are requesting the park from 5:00 a.m. until 6:00 p.m. Set-up and check-in will begin at 5:00 a.m. Clean-up will start after the cook-off, and the dog show/race ends at approximately 5:00 p.m.

Request #5

Central Park-Tuesday in the Park, October 14, 2025, for Maple Leaf Festival® Taco Tuesday Event

We request the use of Central Park for October 14, 2025, for Maple Leaf Festival® Taco Tuesday.

Hours of Operation:

Tuesday, October 14, 2025, Central Park use from 2:00– 8 pm.

Cooks will arrive to begin cooking at 2:00 p.m., and the event will be open to the public from 5:00 p.m. to 7:00 p.m. Attendees will purchase a tasting kit and vote for who has the best tacos in Carthage. Power will be coordinated with CWEP.

Request #6

Central Park-Wednesday in the Park, October 15, 2025, for Maple Leaf Festival® Night of Praise

We request the use of Central Park for the Maple Leaf Festival® Night of Praise event. Hours of operation:

Wednesday, October 15, 2025, Central Park use from 3:00 pm – 8:00 pm, including set-up and tear-down.

This is a night of gospel music in the park from 6:00 p.m. to 8:00 p.m. for all to enjoy on the stage. Set-up begins at 3:00 p.m., and the stage will be broken down and removed from the park after the tear-down. Local churches are invited to attend. Music is only in the park; attendees are encouraged to bring their picnic dinners.

Request #7

Central Park-Saturday in the Park, October 18, 2025, for Maple Leaf Festival® Tractor Show

Request the use of Central Park for the Maple Leaf Festival® Tractor show, hours of operation:

Saturday, October 18, 2024, from 8:00 am – 5:00 pm

This annual event follows the Maple Leaf Festival® Parade and is set up in Central Park for festival attendees to enjoy seeing the old antique tractors throughout the day.

City of Carthage Parks and Recreation Department

Request for Proposals

Parks Tree Removal



Carthage Parks and Recreation Department

521 Robert Ellis Young Drive

Carthage, MO

64836

The City of Carthage, Missouri Parks and Recreation Department is accepting proposals from qualified companies to preventatively remove ash (*Fraxinus* spp.) to reduce public safety issues from the Golf Course.

The RFP provides background information for the contract, contact person for the contract, general scope of services, required contents of the proposal, rating/selection process and the date and time to respond.

A company will be considered qualified by having experience with projects similar in size and nature.

1. BACKGROUND

The City of Carthage has determined that all ash trees are susceptible to being killed by Emerald Ash Borer (*Agrilus planipennis*). The City of Carthage completed a tree inventory of city parks and found there are 122 ash trees in the following parks: Central Park – 2 trees; Kellogg Lake Park – 72 trees; Municipal Park – 10 trees; Golf Course – 38 trees. The City has determined the trees/parks where the most risk exists and will remove the trees noted below. Ash trees in Central Park, Memorial Park, and portions of the Golf Course during LCAP FY2025 Cycle. Ash trees in the remaining portion of the Golf Course will be removed. See included map and list below.

2. CONTACT FOR INFORMATION

Companies responding to this solicitation should direct all inquiries to:

Parks Department
521 Robert Ellis Young Drive
Carthage, MO 64836
Office: 417-237-7035
Email: Parksdepartment@carthagemo.gov

3. SCOPE OF SERVICES

The Scope of Services may include but not limited to providing the following:

Removal

- a. All removals must occur between November 1, 2025, and March 31, 2026.
- b. All tree parts must be removed from the property. Stumps, and surface and major roots must be removed to a depth of 6 inches. Removal may be by stump grinder or dug out. Chips from stump grinding must be removed from the site. The hole must be filled with lightly compacted loam soil (a mixture of sand, silt, and clay particles, with a typical composition of about 30 - 50% sand, 30 - 50% silt, and 8 - 28% clay).
- c. NRCS Bat Plan will be followed for all tree removals.

- d. The City of Carthage will mark the trees with paint. The paint color will be determined closer to the work period.
- e. A utility locates from Missouri 811 (<https://missouri-811.org>) shall be done prior to removing stump, and surface and major roots.

Proposed Removal Ash Trees

FID	Shape	Code	Common Name	DBH (22)	Latitude	Longitude
142	Point	FRPE	Green ash	30	37.171564	-94.345038
488	Point	FRAM	White ash	16	37.169117	-94.339287
491	Point	FRPE	Green ash	26	37.169147	-94.339502
492	Point	FRPE	Green ash	23	37.169167	-94.340052
493	Point	FRPE	Green ash	18	37.169191	-94.340244
494	Point	FRPE	Green ash	19	37.16917	-94.340483
506	Point	FRPE	Green ash	14	37.169456	-94.340727
508	Point	FRPE	Green ash	2	37.168801	-94.340828
511	Point	FRPE	Green ash	24	37.168281	-94.340891
515	Point	FRPE	Green ash	22	37.168678	-94.340442
517	Point	FRAM	White ash	13	37.168684	-94.340121
520	Point	FRPE	Green ash	15	37.168546	-94.339901
526	Point	FRAM	White ash	26	37.168565	-94.339198
527	Point	FRAM	White ash	14	37.168594	-94.339071
535	Point	FRAM	White ash	28.04	37.168647	-94.338586
545	Point	FRAM	White ash	25	37.168214	-94.338264
548	Point	FRAM	White ash	13	37.168387	-94.337907
556	Point	FRPE	Green ash	18	37.167639	-94.338999
560	Point	FRPE	Green ash	24	37.167667	-94.339215
561	Point	FRPE	Green ash	17	37.167653	-94.339344
562	Point	FRPE	Green ash	20	37.167629	-94.339369
563	Point	FRPE	Green ash	14	37.167691	-94.339437

564	Point	FRPE	Green ash	15	37.167698	-94.3395
566	Point	FRPE	Green ash	20	37.167663	-94.339723
575	Point	FR	Ash	14	37.167866	-94.339754
577	Point	FR	Ash	14	37.167874	-94.339886

4. CONTENT OF PROPOSAL

Related Project Experience

Provide a list of clients for which the company has provided similar services.

Cost

Provide a detailed breakdown of expenses, covering personnel costs, equipment usage and transportation, required materials like tools and protective gear, and fees for debris removal, including stump grinding. Additionally, unit pricing should be included to detail costs per tree, per hour, or other relevant measures.

5. RATING CRITERIA

The proposals will be evaluated according to the following criteria in order of relative importance:

- Demonstration of the ability to deliver the Scope of Work
- Cost
- Proof of Insurance and
- City License

6. SELECTION PROCESS

An award may be made to the responsible Company whose proposal is determined to be the most advantageous taking into consideration cost and criteria set forth above to determine the lowest and best bidder.

Carthage Parks and Recreation Department reserves the right to reject all bids and is not obligated to award a contract to any bidder. If it is determined that no acceptable proposal has been submitted, all proposals may be rejected and at the City’s discretion, new proposals may be solicited.

7. SCHEDULE

In order to be considered, two copies of the proposal must be received at Carthage Parks & Recreation, 521 Robert Ellis Young Drive, MO 64836, on or before August 28th, 2025 by 2:00 p.m. local time. All proposals shall be in a sealed package marked: **BID /Ash Tree Removal**

City of Carthage Parks and Recreation Department

Request for Proposals

Parks Tree Purchase and Planting



Carthage Parks and Recreation Department

521 Robert Ellis Young Drive

Carthage, MO

64836

The City of Carthage, Missouri Parks and Recreation Department is accepting proposals from qualified companies for the purchase and planting of trees in the city parks.

The RFP provides background information for the contract, contact person for the contract, general scope of services, required contents of the proposal, rating/selection process and the date and time to respond.

A company will be considered qualified by having experience with projects similar in size and nature.

1. BACKGROUND

The City of Carthage has suffered two severe storm events in 2024 resulting in the loss of approximately 200 mature trees in city parks and golf course. They desire to plant replacement trees for those lost. This coincides with the MDC requirement of planting two trees per each removed with cost-share.

2. CONTACT FOR INFORMATION

Companies responding to this solicitation should direct all inquiries to:

Parks Department
521 Robert Ellis Young Drive
Carthage, MO 64836
Office: 417-237-7035
Email: Parksdepartment@carthagemo.gov

3. SCOPE OF SERVICES

The Scope of Services may include but not limited to provide the following:

Purchase of Trees

1. All trees and root balls shall meet the standards stated in ANSI Z60.1 – 2014.
2. All trees shall measure at least 1.5-inch caliper based on their diameter at six inches above the buttress roots and have a height appropriate to the specie for this caliper as stated in ANSI Z60.1 – 2014 and specifically in the table under bullet point 6 in this section.
3. All trees shall have a single stem for its entire height. Stems shall not have severe bends, crooks, breaks or evidence of topping as determined by the City of Carthage and / or designated agent.
4. All trees shall have at least half of its height with branches. Branches shall be evenly spaced, both vertically and around the stem. Branches shall have wide branch attachment angles to reduce future problems with poor branch structure.

5. All trees will be free of defect as determined by the City of Carthage and / or designated agent.
6. Field Grown root balls shall be firm, not cracked, moist, and meet ANSI Z60.1 – 2014 standards. Buttress roots must be within 4 inches of the top of the root ball. Once excess soil is removed from above the buttress roots, the root ball must meet the specifications listed in the table below.

Container Grown root balls shall be firm, moist, not cracked, not pot bound, does not have any woody (approximately 1/4 inch and greater) circling roots growing anywhere in the container, and meet ANSI Z60.1 – 2014 standards. Buttress roots must be within 2 inches of the top of the root ball. Once excess soil / potting medium is removed from above the buttress roots, the root ball must meet the specifications in the table below.

Trunk Caliper	Average Height Range	Typical Maximum Height	Minimum Root Ball Diameter	Minimum Root Ball Depth	Acceptable Container Classes
1.5 inch	10 to 12 feet	14 feet	20 inches	12 inches	#15, #20, #25
2 inch	12 to 14 feet	16 feet	24 inches	14 3/8 inch	#20, #25, #45

Container Class Specification	Container Volume Range
	Cubic Inches Minimum – Maximum
#15	2768 – 3696
#20	4520 – 5152
#25	5775 – 6861
#45	9356 – 11,434

Volume of a container may be estimated by the following formula. All measurements should be in inches.

$$\text{Volume} = \pi \times \text{radius} \times \text{radius} \times \text{height}$$

Example:

$$3,015.9 = \pi \times 8 \times 8 \times 15$$

7. All trees must meet ANSI Z60.1 - 2014 specifications. A free copy is available from <https://www.americanhort.org/education/american-nursery-stock-standards>.
8. All trees must carry a replacement guarantee of 18 months, regardless of cause, from the date of May 30, 2026. If replacement trees are required, the City of Carthage shall notify successful bidder of need as soon as possible.
9. The City of Carthage reserves the right to visit the successful bidders nursery and individually select trees before or after bid opening. Bidder may request tree selection at nursery prior to submitting a bid.
10. All trees must be handled/carried by supporting the root ball. Tree must never be carried by their trunks or branches.

Inspection, Acceptance, or Rejection of Trees at Delivery

1. Trees must be delivered in an enclosed vehicle or have the tree canopy wrapped with cloth to reduce transport desiccation.
2. All trees must pass inspection of quality, correct cultivar by the City of Carthage and / or designated agent at delivery. Rejected trees will be replaced at successful bidders expense.
3. Inspection criteria includes:
 - a. Correct species, variety, and/or cultivar. Any substitutions shall be approved prior to delivery of nursery stock by the City of Carthage or its designated agent.
 - b. Soil over trunk flare is less than 4 inches from top of soil in ball for B&B trees and less than 2 inches for container trees.
 - c. Correct ball or container size for caliper.
 - d. Correct ball size for caliper after excess soil is removed above the trunk flare for B&B trees or correct volume for container trees.
 - e. Tree has a single trunk without major crooks.
 - f. Branches have wide angle of attachment to trunk.
 - g. Trunk and branches are free of damage with bark intact.
 - h. Tree is not loose in the root ball.
 - i. Root ball is tight (unbroken) and moist.

- j. Branches cover a minimum of one-half the stem.
- k. All coverings on the trunk must be removed upon delivery.
- l. Trees arrive in enclosed vehicle or canopy wrapped by cloth.

Tree List

Common name	Scientific name	Caliper	Quantity
'Autumn Splendor' sugar maple	<i>Acer saccharum</i> 'Autumn Splendor'	1.5 inch	15
or	or		
Fall Fiesta® sugar maple	<i>Acer saccharum</i> 'Bailsta'		

Definitions:

Ball and burlap (B&B) – tree or other plant dug and removed from the ground for replanting, with the roots and soil wrapped in burlap or burlap-like fabric.

Bare root – tree or other plant removed from the ground for replanting without soil around the roots.

Burlap (Hessian) – strong, coarsely woven cloth made from fibers of jute, flax, hemp, or synthetic fibers.

Buttress root – roots at the trunk base that help support the tree.

Caliper – thickness or diameter of the trunk of a tree measured at 6" above the buttress root.

Circling root – roots that grow in a circular pattern when a plant is confined in the same container longer than necessary. If not corrected, will prevent a tree from establishing well when planted and will create future problems, such as blow-over, girdling roots, and strangulation.

Codominant stems – forked branches nearly the same size in diameter, arising from a common junction and lacking a normal branch union; may have included bark.

Container grown – tree or other plant that has been grown and marketed in a container.

Containerized – field-grown plant placed into a container for a time and then sold as a potted plant. Term does not include a plant that has initially been grown in a container.

Flare root – see buttress root

Girdling root – root that encircles all or part of the trunk of a tree or other roots and constricts the vascular tissue and inhibits secondary growth and movement of water and photosynthesis.

Glazed soil – soil with localized compaction that may restrict root development. Often on the perimeter of the planting hole especially in clay soils.

Grade – surface level of the ground

Guy – a steel or synthetic-fiber cable between a tree or branch and an external anchor (another tree, the ground, stake, or other fixed object) to limit movement and provide supplemental support.

Hardening off – a process that acclimates B&B trees to water stress when dug with foliage. Foliage should be shaded, shielded from wind, and sprinkled frequently for several weeks. Also used in reference to acclimatization to cold temperatures.

Heeling in – method of storing bare-root trees by covering roots with sawdust, mulch, or soil until ready to plant.

Included bark – bark that becomes embedded in a crotch (union) between a branch and trunk, or between codominant stems. Causes a weak structure.

Loam Soil – a mixture of sand, silt, and clay particles, with a typical composition of about 40% sand, 40% silt, and 20% clay.

Liner – a young tree planted out in nursery rows and grown to suitable landscape size (also known as lining-out stock). Many sizes and methods of propagation are used.

Planting – installing a plant in the landscape.

Root ball – soil that contains all (i.e., container grown) or a portion (i.e., B&B) of the roots that are moved with a plant when it is planted or transplanted.

Root flare – see trunk flare

Root pruning – process of cutting roots on a field grown tree or pre-digging a root ball to increase the density of root development within the final ball.

Shaving – removing the entire outside periphery (sometimes including the bottom) of a container root ball.

Soil amendment – material added to soil to improve its physical, chemical, and/or biological properties.

Soil anchor – device that is driven, screwed, buried, or otherwise inserted into the ground, to which a guying cable is attached.

Stage digging – process to reduce sudden stress when deciduous plants must be dug in leaf. The root ball is dug (and roots are cut) section by section over a period of time.

Transplanting – process of moving a plant to a new location.

Tree spade – mechanical equipment to dig, transport, and replant trees with a sufficiently large volume of roots and soil.

Tree wrap – material used to wrap the trunks of newly planted or transplanted trees to protect them from injury.

Trunk flare – transition zone from trunk to roots where the trunk expands into the buttress or structural roots. Root flare.

Wire basket – type of metal basket used to support the root ball of a B&B tree or a tree dug with a tree spade.

Planting Specifications.

1. All maintenance after initial planting and mulching, including watering, pest identification and keeping mulch in place will be done by the City of Carthage and / or designated agent.
2. A map identifying location of all trees will be provided. Map provides the approximate location for the tree planting site. Slight movement up to 5 feet is anticipated due to obstacles like underground utilities needing to be avoided. The tree locations are indicated by the numbers 1 – 15. The specific specie/cultivar will be referenced from the list included. The exact location of the trees to be planted will be painted with white paint on the ground closer to the period of work.
3. An utility locate from Missouri 811 (<https://missouri-811.org/>) shall be done prior any tree being planted.
4. Department of Conservation Community Forester shall assist in the planting of the first tree to demonstrate the accepted planting method.
5. All trees may be planted in the Fall of 2025 before November 2025 or Spring of 2026 between March 1 through April 30.

6. The planting hole is to be a minimum of 2 times the width of the root ball and no deeper than where the trunk flare is sitting at or slightly above the soil grade. Soil in the bottom of the hole should be firm so as not to settle after the tree is planted.
7. All string, wire, burlap, or other non-soil material shall be removed at planting from the root ball. Containers shall be removed completely.
 - a. Wire basket can be completely removed by removing the lower rung or two of wire while the tree is laying on the ground on its side prior placing in the planting hole. The remaining wire basket can be removed after the tree is placed in its final location.
 - b. All string must be removed from the root ball after the tree is placed in its final location.
 - c. Burlap must be cut off as low as possible on the ball without moving the root ball from its final location.
8. All sides of the planting hole must be scarified. Soil is to be loose. Glazed soil is unacceptable and can prevent roots from growing into surrounding soil.
9. Once the tree is set in its final location, fill the planting hole with native soil removed from the hole. If too many large rocks are removed in the process, supplemental soil may be added to the planting hole. Supplemental soil must be of either similar quality to existing soil or a loam soil.
10. Water the planting hole to saturation both while filling the hole with soil and after completing soil replacement.
11. Allow the soil to settle as the water drains. Add supplemental soil after settling has occurred.
12. Place a mulch ring around the tree. The mulch ring shall be to a diameter of 6 feet and to a depth of 4 inches. The mulch should be pulled away from the trunk by 4 inches in all directions. This should result in a "donut hole" around the tree stem.
13. Staking will only be done if the tree will not stand by itself. It may be necessary for the successful planting bidder to revisit the site after the next rain and/or wind event to determine this. If staking is needed, the strapping around the tree will be wide and flexible. Wire, wire through garden hose, etc. shall not be used. Three stakes shall be used in an equidistant triangle. The stakes shall be driven into the soil outside of the planting hole. The strapping shall be attached to the stakes. Alternative staking methods may be considered upon approval of City of Carthage and / or designated agent.

Tree Planting Inspection

1. All trees will be inspected to ensure specifications were followed. If an unacceptable condition is found, the successful bidder will be required to correct the issue.
2. Inspection criteria includes:
 - a. Trees were planted in the designated window or exemption approved by the City of Carthage
 - b. Planting hole is at least 2 times the diameter of the root ball.
 - c. Planting hole depth is correct by showing the buttress roots are at grade or slightly above. Trees that settle / sink below grade after inspection must be replanted by successful planting bidder.
 - d. All string, wire, burlap, container or other non-soil material was removed from root ball.
 - e. Perimeter of planting holes was scarified to address potential glazing.
 - f. Soil around root ball in the planting hole is settled, moist, and even with grade.
 - g. The mulch ring is 6 feet in diameter, 4 inches deep with a "donut hole" of mulch pulled away from the tree trunk.

Staking, if needed, has three stakes, stakes are in firm soil away from the root ball, uses wide, flexible strapping.

4. **CONTENT OF PROPOSAL**

Related Project Experience

Provide a list of clients for which the company has provided similar services.

Cost

Provide an itemized cost breakdown that includes labor for planting, transport, and maintenance. Additionally, include the costs of materials.

Proposal Worksheet

Please complete and include the attached tree list proposal worksheet.

5. **RATING CRITERIA**

The proposals will be evaluated according to the following criteria in order of relative importance:

- Demonstration of ability to deliver the Scope of Work
- Cost

6. SELECTION PROCESS

An award may be made to the responsible Company whose proposal is determined to be the most advantageous taking into consideration cost and criteria set forth above to determine the lowest and best bidder.

Carthage Parks and Recreation Department reserves the right to reject any and all bids and is not obligated to award a contract to any bidder. If it is determined that no acceptable proposal has been submitted, all proposals may be rejected and at the City's discretion, new proposals may be solicited.

7. SCHEDULE

In order to be considered, two copies of the proposal must be received at the City of Carthage, 326 Grant Street, Carthage, MO 64836, on or before August 28th, 2025 by 2:00 p.m. local time. All proposals shall be in a sealed package marked: **BID / Parks Tree Purchase**

July 2025 Golf Report

July 2025 Rounds – 3,978 | Revenue - \$134,201.55

July 2024 Rounds – 4,037 | Revenue - \$127,760.69

July 2023 Rounds – 3,614 | Revenue - \$116,182.84

Green Fee	Membership	Cart Fee	Driving Range	Event Services	Golf Gift Certificate	Merchandise Gift Certificate <small>(Club Credit)</small>	Pro Shop	Food & Beverage	Pre Paid Rounds	Golf Rentals
\$48,377.46	\$12,361.44	\$34,270.60	\$5,592.21	\$8,960.31	\$997.57	\$1,927.46	\$16,127.31	\$5,543.08	\$0	\$44.10

July 2025 Summary

July was a good month for us. Our rounds were a little lower than last year, but we made more revenue. This has to do with making more revenue in memberships and driving range.

I believe we had less rounds due to the excessive heat. We still have a lot of rounds played, but there are plenty of golfers who won't play when it gets very hot. We can see that the hottest parts of the day around 2-5 pm on the weekdays are very slow. We plan to use dynamic pricing to target these slow times and fill more tee times. We ended the month with 3,978 rounds, 2,638 of them being public players, and the rest were member rounds.

We sold 11 junior memberships, 1 family of two Membership, 2 single annual green/cart fee memberships, 2 single annual green fee memberships, and 1 senior annual green/cart fee membership. The rest of the membership revenue was from automatic monthly withdrawals.

JULY GOLF MAINTENANCE REPORT

- Add dirt to wash out areas
- Rolled greens
- Mowed greens
- Cleaned up sticks and debris around the course where needed
- Cleaned up bunkers
- Sprayed weeds out of course
- Mowed fairways
- Sprayed greens
- Top dressed greens
- Mowed greens surrounds and tee surrounds
- Marked course for tournament
- Fertilized tees
- Treated number 6 pond for algae
- Prepped course for July 4th
- Weedeated around trees
- Edged cart paths
- Adjusted reels
- Edged bunkers, tee yardage markers, fairway yardage markers, fairways green and tee sprinkler heads
- Fixed kubota tractor front tie rod
- Repaired bad bearing in fairway mower wheel
- Course cleanup from 4th of July
- Pumps went out over weekend scrambled to get water managed to get pumps up and going
- Repaired faulty butterfly valve in pump station
- Adjusted pressure relief valve in pump station
- No water for fairways and tees for a week in extreme heat
- Needle tined greens
- Pencil tines collars
- Aerified fairways
- Started to replace wire for a fairway
- Sprayed parking lot for weeds in cracks at pro shop
- Treated shrubs for bagworms at pro shop

July 2025 Parks Maintenance

General:

- Cleaned restrooms in all parks.
- Trash pickup in all parks.
- Inspected playground equipment in parks.
- Mowed all parks.
- Mower maintenance.
- Sprayed weeds.
- Watered flowers.

Municipal Park:

- Beef barn water line repairs.
- Pool house maintenance.
- Weedeat and spray rodeo arena.
- Cleaned up arena.

Central Park:

- Watered trees.
- Fountain maintenance.

Griggs Park:

- Water line repairs.
- Fence work.

Fair Acres:

- Stripe and raked fields.
- Water line repairs.
- Brush hog.

Other:

- Red, White and Boom.
- Food Truck Friday.
- Pulled weeds at roundabout.
- Rock work at PD.
- Assisted Vision Carthage with wooden spools and storage.
- Mulch work on south roundabout.

CIVIL WAR MUSEUM

ATTENDANCE

July 2025

DATE	CARTHAGE	TOURIST	LOCATION UNLISTED	GRAND TOTAL	CASH	CARDS
7/1/2025	3	14		17	\$25.00	\$ 26.00
7/2/2025	17	4		21	\$45.00	
7/3/2025	2	19		21	\$ 58.00	\$ 45.00
7/4/2025	CLOSED	CLOSED	CLOSED	CLOSED	CLOSED	CLOSED
7/5/2025	7	43		50	\$ 46.00	\$ 44.00
7/6/2025	0	17		17	\$22.00	
7/7/2025	CLOSED	CLOSED	CLOSED	CLOSED	CLOSED	CLOSED
7/8/2025	7	27		34	\$ 42.00	\$ 30.00
7/9/2025	0	14		14		
7/10/2025	2	16		18		
7/11/2025	1	19		20		\$ 23.00
7/12/2025	0	36		36	\$ 66.00	\$ 58.00
7/13/2025	1	0		1		
7/14/2025	CLOSED	CLOSED	CLOSED	CLOSED	CLOSED	CLOSED
7/15/2025	0	14	0	14	\$ 27.00	\$ 20.00
7/16/2025	0	15	0	15	\$139.00	
7/17/2025	3	7	0	10	\$ 0.00	\$ 0.00
7/18/2025	4	23		27	\$ 44.00	
7/19/2025	0	22		22	\$35.00	
7/20/2025	1	13		14		\$ 47.00
7/21/2025	CLOSED	CLOSED	CLOSED	CLOSED	CLOSED	CLOSED
7/22/2025	1	21		22	\$ 27.00	\$ 30.00
7/23/2025	4	10		14		\$ 3.00
7/24/2025	4	18		22	\$27.00	\$ 26.00
7/25/2025	0	17		17	\$12.00	\$ 7.00
7/26/2025	2	15		17	\$ 15.00	\$ 54.00
7/27/2025	0	3		3		
7/28/2025	CLOSED	CLOSED	CLOSED	CLOSED	CLOSED	CLOSED
7/29/2025	4	13		17	\$ 16.00	\$ 15.00
7/30/2025	2	9		11	\$20.00	
7/31/2025	3	15		18	\$ 6.00	\$ 15.00
TOTAL	68	424	0	492	\$ 672.00	\$ 443.00